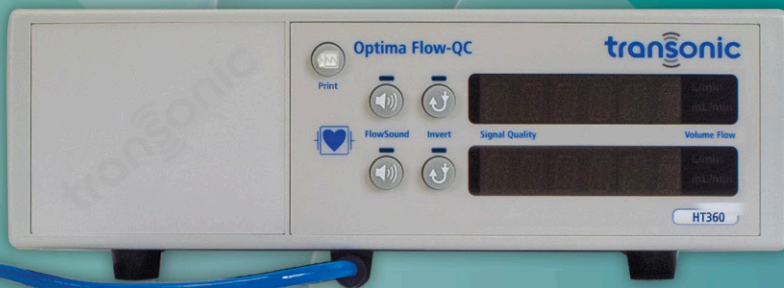


Flow Measurement For Distal Limb Perfusion Yes, It Exists!

Make ECMO associated amputations a thing of the past
(because preventing it just became simpler)



Our sensors measure flows in the tubing size and flow range necessary for distal perfusion.

Not only are they small, they're also precise
(50-250mL low flow range).

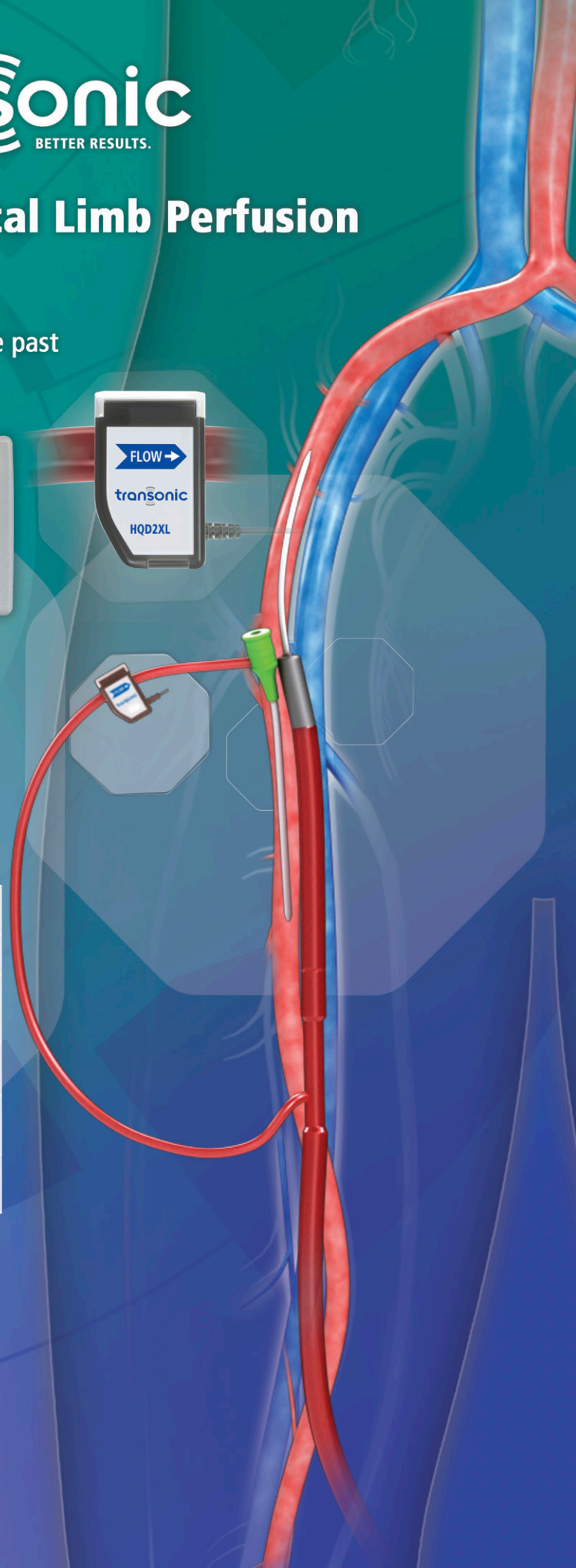
HQD - XL SENSORS			
CATALOG#	TUBING		
	ID INCHES	Wall Thickness INCHES	OD INCHES
HQD2XL	In Sizes 2XL-5XL Ratio Of Tubing Wall Thickness to OD Must Not Exceed 1.5 For PVC; 1:3 For Silicone		1/8
			5/32
HQD6XL	1/4	1/16	3/8



**OPTIMA/Sensor
Flyer**



**ECMO
Landing Page**



Save a Limb, Save a Life!

At Transonic, we pioneered non-invasive flow measurement. Now our tried-and-true technology has come to your space — exactly where you need it most.

Now we can monitor distal limb flows quantitatively, in mL/min from start to finish, and with no modification to the circuit!

But it just became easy.

We offer quick-clamp-on sensors, designed for your distal shunt. Not only are they small, they're also precise. Set your mind at ease and spare your patient.

The Optima is your new partner in ECMO management. Offering real-time flow measurements in tubing down to 1/8" OD, nothing escapes the Optima watchful eye.



(50-250mL low flow range)



(250-1250mL low flow range)



transonic
THE MEASURE OF BETTER RESULTS.

www.transonic.com

USA HEADQUARTERS

Transonic Systems Inc.
Ithaca, NY, U.S.A.
Tel: +1 607-257-5300
support@transonic.com

EUROPE

Transonic Europe B.V.
Elsloo, The Netherlands
Tel: +31 43-407-7200
europe@transonic.com

ASIA/PACIFIC

Transonic Asia Inc.
Dayuan, Taiwan
Tel: +886 3399-5806
support@transonicasia.com

JAPAN

Transonic Japan Inc.
Tokorozawa, Japan
Tel: +81 04-2946-8541
japan@transonic.com